



A commitment for evolution

Henn na Hotel

# A commitment for evolution

Operating under the motto “A Commitment for Evolution,” Henn na Hotel is a hotel chain that offers superb entertainment value, providing its guests with excitement, along with the usual hotel comforts, through the introduction of human-replacement robots and other state-of-the-art technology.



## Contents

Opened on  
April 1,  
2019

- 02 Henn na Hotel Kyoto Hachijoguchi
- 04 Henn na Hotel Maihama Tokyo Bay
- 05 Henn na Hotel Tokyo Nishi-Kasai
- 06 Henn na Hotel Tokyo Ginza
- 07 Henn na Hotel Tokyo Hamamatsucho
- 08 Henn na Hotel Tokyo Asakusabash
- 09 Henn na Hotel Tokyo Akasaka
- 10 Henn na Hotel Tokyo Haneda
- 11 Henn na Hotel Fukuoka Hakata
- 12 Henn na Hotel Osaka Shinsaibashi
- 13 Henn na Hotel Osaka Nishi-Shinsaibashi
- 14 Henn na Hotel Laguna Ten Bosch
- 15 Henn na Hotel Huis Ten Bosch
- 16 Common Hotel Specifications/Facilities
- 18 List of Henn na Hotels
- 20 Hotel Map
- 21 Company Profile





# Henn na Hotel Kyoto Hachijoguchi



Conveniently located in front of the Hachijoguchi Exit of Kyoto Station—the gateway to Kyoto—this new hotel offers a modern take on the pleasures of Kyoto and various elements of Japanese style.

Why not enjoy a stay at this “Future Japanese-style” hotel, which incorporates the unique qualities of Kyoto, the old capital of Japan, where history walks side by side with innovation, to create a new style based on the concept of “continuous evolution.”

## Point 1 Lobby Entertainment



Lobby decorations designed by Henn na Hotel, created through a fusion of history and innovation  
The lighting that colors the ceiling is based on the image of the torii gates at Fushimi Inari Taisha shrine, and this is combined with images of seasonal beauty projected from large displays.

**Point 2 Great location!**  
**Prime location for sightseeing in Kyoto**  
Located right in front of Kyoto Station, the gateway to Kyoto, Japan's prime tourist destination, the hotel also offers convenient access to sightseeing spots.

**Point 3 Convenient!**  
**In-room tablet service [Tabii]**  
Each guest room is equipped with a "tabii" tablet that allows you to control the air-conditioning, lights, and TV, etc., as well as confirm restaurant seating availability.

**Introducing the Phiten Room!**  
By impregnating the wallpaper and carpets with Aqua Titan, Phiten's water-soluble metal technology, we have created a space infused with Phiten technology that can help guests achieve a relaxed mental and physical state.

**Point 4 Comfortable!**  
**Phiten Room**  
Ease away your travel woes, and restore your energy for the next day, in this health-themed concept room.

**Point 5 Fun!**  
**In-room light adjustment [Philips Hue]**  
You can adjust the color of the lighting in the room to suit your own preferences, with 16 million color variations.

## Guest Room (all non-smoking)

Why not relax amid soft color shades and indirect lighting to ease away your travel woes, surrounded by equipment and materials that offer a sense of Kyoto, Japan's prime tourist destination.

Some of our guest rooms are Phiten Rooms that feature a health theme design to ease your travel woes.



【Double Room】 Double room with a bright, clean interior that incorporates Japanese-style materials



【Phiten Room/Single】 Phiten Room with a health theme



【Twin Room】 The Japanese-style materials create a sense of cleanliness and a relaxed atmosphere.



【Phiten Room/Twin】 Concept room with a health theme



【Triple Room】 Triple room recommended for families and groups

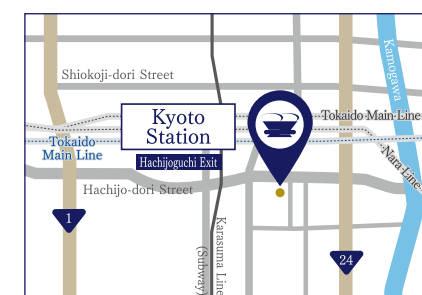
Guest Room type	Size	Capacity	Number of guest rooms	Bed type	Bed size	Rates / per room
【Phiten Room】 Single	11.64~12.52㎡	1 guests	4 rooms	1 bed	140cm×195cm	¥30,000~( 1 adult in 1 room / Inclusive of Tax and Service Fees)
【Phiten Room】 Double	20.11㎡	1-2 guests	2 rooms	1 bed	155cm×195cm	¥34,000~( 2 adults in 1 room / Inclusive of Tax and Service Fees)
【Phiten Room】 Twin	18.75~21.83㎡	1-2 guests	20 rooms	2 beds	110cm×195cm	¥36,000~( 2 adults in 1 room / Inclusive of Tax and Service Fees)
Double Room	20.11㎡	1-2 guests	6 rooms	1 bed	154cm×195cm	¥33,000~( 2 adults in 1 room / Inclusive of Tax and Service Fees)
Twin Room	18.75~23.06㎡	1-2 guests	61 rooms	2 beds	110cm×195cm	¥34,000~( 2 adults in 1 room / Inclusive of Tax and Service Fees)
Triple Room	24.18㎡	1-3 guests	5 rooms	3 beds	100cm×195cm	¥46,033~( 2 adults in 1 room / Inclusive of Tax and Service Fees)

(as of March 2019)

## Hotel Services

Hotel facilities	<ul style="list-style-type: none"> <li>● Front desk robots</li> <li>● Late check-out (extra fee)</li> <li>● Children free (Under 6 years of age)</li> <li>● Wheelchair service</li> <li>● Barrier-free room</li> <li>● ECO Make (for stays of more than two nights)</li> <li>● Elevator security</li> <li>● AED</li> </ul>
Room amenities	<ul style="list-style-type: none"> <li>● Free Wi-Fi throughout hotel</li> <li>● LCD TV</li> <li>● Safety box</li> <li>● Separate bath and toilet</li> <li>● Air conditioner</li> <li>● Refrigerator (empty)</li> <li>● Electric kettle</li> <li>● Power outlet near headboard</li> <li>● Disposable slippers</li> <li>● Toothbrush set</li> <li>● Razor</li> <li>● Hairbrush</li> <li>● Facial cotton set</li> <li>● Shampoo &amp; conditioner</li> <li>● Body soap</li> <li>● Robe</li> <li>● Bath towel</li> <li>● Face towel</li> <li>● Hair dryer</li> <li>● Heated bidet toilet</li> <li>● Air purifier with humidifier</li> </ul>

## Access



Prime location 2 minutes' walk from Kyoto Station Hachijoguchi Exit

- <Access by Train>**  
 ● Two minutes' walk from Kyoto Station Hachijoguchi Exit  
**<Access by Car>**  
 ● About 12 minutes from Kyoto Minami IC on the Meishin Expressway  
**<Access by Airplane>**  
 ● From Osaka International Airport, take the Limousine Bus bound for Kyoto Hachijoguchi to Kyoto Hachijoguchi (approx. 50 to 55 minutes) and then walk for 2 minutes  
 ● From Kansai International Airport, take the Limousine Bus bound for Kyoto Hachijoguchi to Kyoto Hachijoguchi (approx. 90 minutes) and then walk for 2 minutes  
 ● From Kansai International Airport, take the JR Haruka Limited Express No. 20 to Kyoto Station (approx. 80 minutes) and then walk for 2 minutes from Kyoto Station Hachijoguchi Exit

igashisancho, Higashikujo, Minami-ku, Kyoto-shi, Kyoto Prefecture, 601-8004  
Call Center, Henn na Hotel Kyoto Hachijoguchi  
TEL 075-662-0333 (Daily: 10:00- 17:00 [except Saturdays, Sundays, and national holidays])  
URL <https://www.hennnahotel.com/kyoto-hachijoguchi/>



## Restaurant



**[Name]** THE BORING FOODS & ORDINARY COFFEE  
**[Capacity]** 52 seats  
**[Menu]** Buffet with a wide range of colorful vegetables  
**[Hours]** [Morning] 7:00 to 11:00  
 [Daytime] 11:30 to 15:00  
 [Evening] 15:00 to 23:30



# Henn na Hotel Maihama Tokyo Bay



## Cutting-edge hotel aiming for comfort and fun - A variety of advanced robots are here to greet you!

Henn na Hotel is the only hotel in the Maihama area manned by the world's leading robots. Robots throughout the hotel starting with the dinosaur robots in the front lobby, and the communication robot in the guest rooms, support a comfortable hotel stay. Come enjoy a never-before excitement and comfort.

**The latest robots help make your stay fun**  
A variety of robots work throughout the hotel. Both children and adults are sure to be amazed. Stay here and make wonderful memories of your trip when visiting popular theme parks and tourist attractions in the area.



**【Standard Twin】**  
This guest room is recommended for couples and families. The center sofa bed can be opened up for a third guest, creating a comfortable bed space. Enjoy a relaxing time.



**【Standard Triple】**  
This guest room accommodates up to four adults. The wide room is perfect for families, groups, and girls-only getaways, etc.



**【Corner Twin】**  
This guest room accommodates up to four adults. The wide room is perfect for families, groups, and girls-only getaways, etc.

Guest Room type	Size	Capacity	Number of guest rooms	Bed type	Bed size	Rates / per room
Standard Twin	18.5㎡	1-3 guests	50 rooms	2 beds, 1 sofa bed	90cm×200cm (sofa bed is same size)	¥28,000~( 2 adults in 1 room / Inclusive of Tax and Service Fees)
Standard Triple	23.5~24.5㎡	2-4 guests	40 rooms	3 beds, 1 sofa bed	90cm×200cm (sofa bed is same size)	¥34,000~( 3 adults in 1 room / Inclusive of Tax and Service Fees)
Corner Twin	26㎡	1-3 guests	10 rooms	2 beds, 1 sofa bed	90cm×200cm (sofa bed is same size)	¥30,500~( 2 adults in 1 room / Inclusive of Tax and Service Fees)

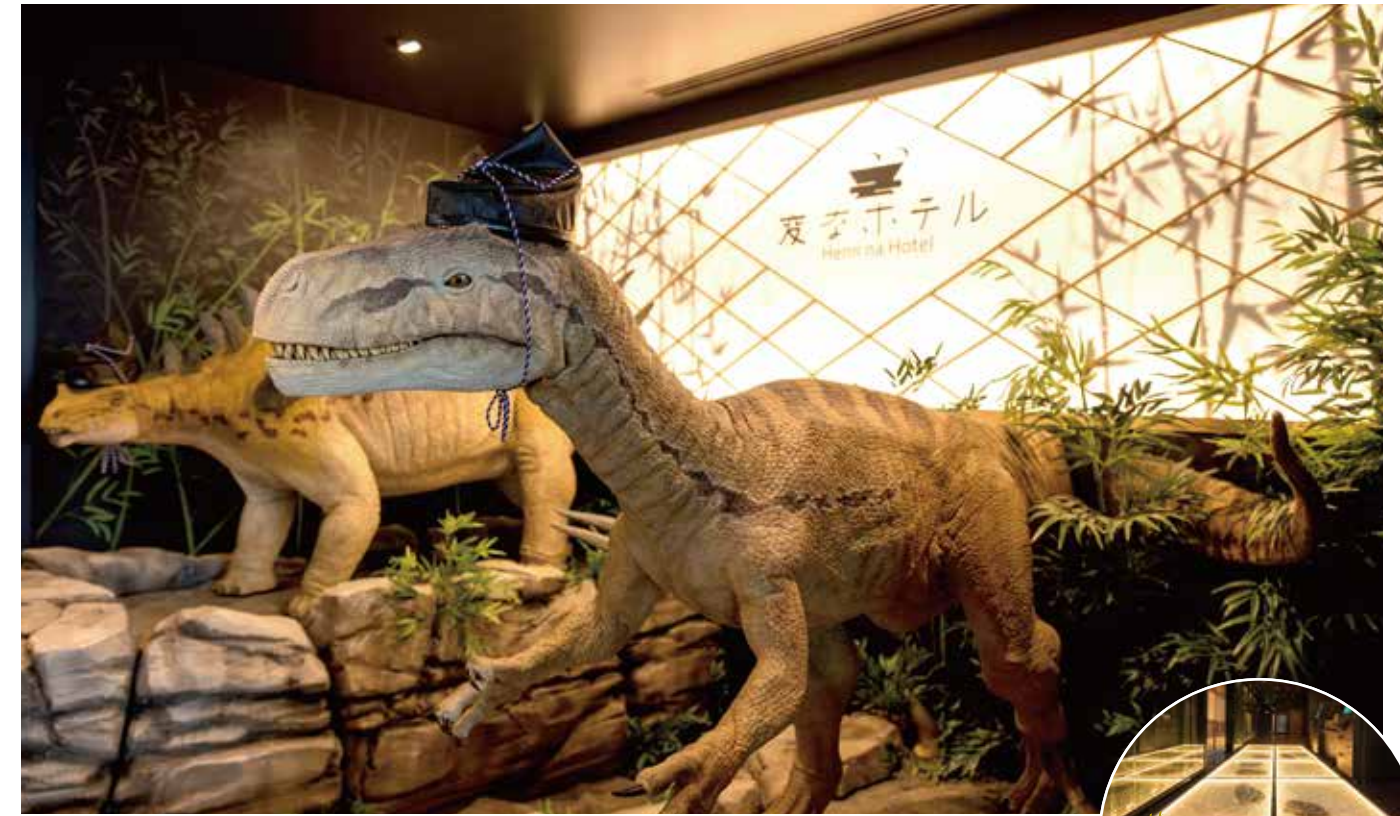
(as of March 2019)

## Restaurant



**[Name]** Jurassic Diner  
**[Capacity]** 50 seats  
**[Menu]** International buffet  
**[Hours]** 6:30 to 9:30 \* Open only for breakfast

# Henn na Hotel Tokyo Nishi-Kasai



## Robot hotel - where cutting-edge robots greet you in a "Japanese" atmosphere

Cutting-edge dinosaur robots greet our customers in the lobby designed after a Japanese garden. Experience the fusion of "Japan" and "Robots", and enjoy a new hotel life that provides relaxation and convenience.

**Inspired by Japanese gardens**  
This fantastic space combines prehistoric elements, including dinosaurs and ammonites, and a design based around "Japanese style" inspired by Japanese gardens, including a stone garden.



**【Standard Double Room】**  
The standard double room has a 140cm double bed, and can accommodate up to two guests.



**【Twin Room】**  
This guest room has two separated beds. It is suitable for couples, friends, as well as guests traveling on business.



**【Deluxe Twin Room】**  
With a sofa bed, this guest room can accommodate up to three adults. This room is perfect for families, groups, and girls-only getaways, etc.

Guest Room type	Size	Capacity	Number of guest rooms	Bed type	Bed size	Rates / per room
Standard Double Room	13.1㎡	1-2 guests	50 rooms	1 bed	140cm×195cm	¥22,000~( 2 adults in 1 room / Inclusive of Tax and Service Fees)
Twin Room	15.9㎡	1-2 guests	22 rooms	2 beds	90cm×195cm	¥25,000~( 2 adults in 1 room / Inclusive of Tax and Service Fees)
Deluxe Twin Room	18.7㎡	1-3 guests	28 rooms	2 beds, 1 sofa bed	90cm×195cm (sofa bed is same size)	¥27,000~( 3 adults in 1 room / Inclusive of Tax and Service Fees)

(as of March 2019)

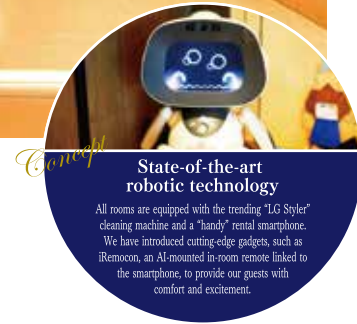
## Restaurant



**[Name]** Ori-Ori  
**[Capacity]** 25 seats  
**[Menu]** [Morning] ONIGIRI Buffet  
[Daytime/Evening] Japanese soba  
**[Hours]** [Morning] 6:30 to 10:00 (hotel guests only)  
[Daytime] 11:30 to 15:00 (closed on Sunday)  
[Evening] 17:00 to 22:00 (closed on Sunday)



# Henn na Hotel Tokyo Ginza



Our state of the art robot hotel welcomes guests from the five continents. Enjoy your stay in Tokyo at our modern facilities.

Henn na Hotel is the only hotel manned by the world's leading robots. Cutting-edge technology in the guest rooms supports a comfortable hotel stay. The bar at the lobby floor is the perfect scene for guests to gather in the morning and at night.



**【Twin Room】**  
This guest room features separate beds, and is also suitable for business travelers.



**【Deluxe Single Room】**  
This guest room for one adult is perfect for business travelers.



**【Double Room】**  
The standard double room has a 160cm double bed, and can accommodate up to two guests.



**【Deluxe Twin Room】**  
The sofa bed can be used when a room is reserved for three guests, providing beds for each guest.

Guest Room type	Size	Capacity	Number of guest rooms	Bed type	Bed size	Rates / per room
Deluxe Single Room	13㎡	1 guest	34 rooms	1 bed	140cm×195cm	¥26,000~( 1 adult in 1 room / Inclusive of Tax and Service Fees)
Double Room	14.5㎡	1-2 guests	27 rooms	1 bed	160cm×195cm	¥27,500~( 2 adults in 1 room / Inclusive of Tax and Service Fees)
Twin Room	19.6㎡	1-2 guests	9 rooms	2 beds	90cm×195cm	¥29,000~( 2 adults in 1 room / Inclusive of Tax and Service Fees)
Deluxe Twin Room	17.5㎡	1-3 guests	28 rooms	2 beds, 1 sofa bed	90cm×195cm	¥30,500~( 2 adults in 1 room / Inclusive of Tax and Service Fees)

(as of March 2019)

## Restaurant



[Name] PAYTO  
[Capacity] Seated: 10 people/  
Standing: 20 people  
[Menu] BAR&CAFE  
[Hours] [Morning] 6:30 to 10:00  
(hotel guests only, take-out only)  
[Daytime/Evening] Closed

# Henn na Hotel Tokyo Hamamatsucho



We have introduced state-of-the-art technology, based on the themes of pleasant sleep and health, to create a pleasant healing experience for our guests.

"Good night, good morning!" The Phiten Floor, and a medical clinic focusing on good sleep and health, is now open. Guest Rooms are designed with a calming indigo color that suggests night, and accent colors that suggest sun flares. The functionality and comfort lead guests to a good night's rest and refreshed morning.



**【Phiten Room】**  
The "Phiten Room Floor (Phiten Space Design)", incorporating AQUAMETAL technology in all guest rooms and hallways, has opened on the third floor. We have created spaces adopting Phiten technology by impregnating the area with Phiten's water-soluble metal technology AQUA TITAN. Down bedding impregnated with AQUA GOLD helps guide your body and mind to a truly relaxed state.



**【Tower view Deluxe Twin/ Top floor】**



**【Single Room】**

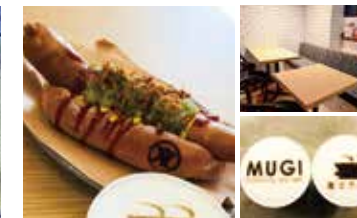


**【Semi-Double Room】**

Guest Room type	Size	Capacity	Number of guest rooms	Bed type	Bed size	Rates / per room
<b>【Phiten Room】 Single</b>	12.0-12.24㎡	1 guest	3 rooms	1 bed	120cm×200cm	¥19,000~( 1 adult in 1 room / Inclusive of Tax and Service Fees)
<b>【Phiten Room】 Semi-Double</b>	11.54-12.29㎡	1-2 guests	6 rooms	1 bed	140cm×200cm	¥23,000~( 2 adults in 1 room / Inclusive of Tax and Service Fees)
<b>【Phiten Room】 Twin</b>	19.2㎡	1-2 guests	1 room	2 beds	100cm×200cm	¥26,000~( 2 adults in 1 room / Inclusive of Tax and Service Fees)
Single Room	12.0-12.24㎡	1 guest	31 rooms	1 bed	120cm×200cm	¥18,000~( 1 adult in 1 room / Inclusive of Tax and Service Fees)
Semi-Double Room	11.54-12.29㎡	1-2 guests	63 rooms	1 bed	140cm×200cm	¥20,500~( 2 adults in 1 room / Inclusive of Tax and Service Fees)
Twin Room	19.2㎡	1-2 guests	11 rooms	2 beds	100cm×200cm	¥22,000~( 2 adults in 1 room / Inclusive of Tax and Service Fees)
Tower view Deluxe Twin/ Top floor	17.85-24.14㎡	1-3 guests	3 rooms	2 beds, 1 sofa bed	100cm×200cm	¥26,000~( 2 adults in 1 room / Inclusive of Tax and Service Fees)

(as of March 2019)

## Restaurant



[Name] MUGI  
[Capacity] 30 people  
[Menu] [Breakfast] Hot dog plate  
[Lunch] Cafe, food truck  
[Dinner] Bar  
[Hours] [Morning] 6:30 to 10:00 (hotel guests only)  
[Daytime] 11:30 to 15:00  
(closed on Sat., Sun., and national holidays)  
[Evening] 17:00 to 23:00



# Henn na Hotel Tokyo Asakusabashi



The robot hotel is now open in an ideal location, just two minutes walk from Asakusabashi station. Access has never been more convenient – only an hour or so from either Haneda or Narita Airport.

Set in blue – the color of the sea connecting the five continents and the sky - and like fish who swim among all five continents and birds migrating which way – our hotel space welcomes global visitors.

**Be the first to try out new ideas and products!**  
We've collaborated with Japan's largest cloud funding service "Makuake", so guests can try ingenious Makuake products in their guest room.



**【Deluxe Twin】**  
A room featuring our concept color blue. Offering all the facilities you need to ease your fatigue.

**【Standard Single】**

**【Standard Double】**  
【LG Styler Roo/Double】

**【Standard Twin】**  
【LG Styler Room/Twin】

**【LG Styler Room/Triple】**

Guest Room type	Size	Capacity	Number of guest rooms	Bed type	Bed size	Rates / per room
Standard Single	12.75~13.0㎡	1 guest	12 rooms	1 bed	120cm×195cm	¥22,000 ~ (1 adult in 1 room / Inclusive of Tax and Service Fees)
Standard Double	12.75~13.0㎡	1-2 guests	3 rooms	1 bed	140cm×195cm	¥23,000 ~ (2 adults in 1 room / Inclusive of Tax and Service Fees)
【LG Styler Room】 Double	12.75㎡	1-2 guests	39 rooms	1 bed	140cm×195cm	¥24,000 ~ (2 adults in 1 room / Inclusive of Tax and Service Fees)
Standard Twin	17.25㎡	1-2 guests	20 rooms	2 beds	100cm×195cm	¥26,000 ~ (2 adults in 1 room / Inclusive of Tax and Service Fees)
【LG Styler Room】 Twin	17.0~19.0㎡	1-2 guests	51 rooms	2 beds	100cm×195cm	¥27,000 ~ (2 adults in 1 room / Inclusive of Tax and Service Fees)
【LG Styler Room】 Triple	17.25㎡	1-3 guests	19 rooms	2 beds, 1 sofa bed	90cm×195cm	¥31,300 ~ (3 adults in 1 room / Inclusive of Tax and Service Fees)
Deluxe Twin	25.75㎡	1-3 guests	1 room	2 beds, 2 beds, 1 sofa bed	120cm×195cm (Sofa bed 90cm×195cm)	¥35,300 ~ (2 adults in 1 room / Inclusive of Tax and Service Fees)

(as of March 2019)

## Restaurant



**[Name]** GANGA  
**[Capacity]** 64 seats  
**[Menu]** Indian dishes  
**[Hours]** [Morning] 6:30 to 10:00  
(Japanese cuisine and Indian cuisine buffet)  
[Daytime] 11:30 to 15:00  
[Evening] Closed  
(However, the restaurant can be chartered for groups of eight persons or more with an advance reservation.)

# Henn na Hotel Tokyo Akasaka



Easily access Tokyo, Shinjuku, Roppongi, Shibuya and Ginza from three stations within walking distance

"ECO LUXURY" To relax body and mind from hectic city life, we use a wealth of naturally inspired materials in our hotel, while retaining an urban atmosphere. Present-day Akasaka, literally the 'red slope', was formerly known as 'Akanezaka', due to the Akane plant cultivated there and later renamed 'Akasaka'. We use the color of the leaf veins of the 'Akane' plant to decorate our reception area and guest rooms.

**Leveraging technology for a sounder sleep**  
The ultimate in sleeping comfort, thanks to our world-first "PUDOCON" "in-room" temperature control. Retaining a sleeping temperature of 33 degrees C while in bed, minus 1 degree Celsius for sleep, plus 1 degree Celsius for waking – harnessing the power of temperature for sleep control.  
\* Certain rooms only



**【Standard Semi-Double】**  
【LG Styler Room/Semi-Double】

**【LG Styler Room/Double】**

**【Standard Twin】**  
【LG Styler Room/Twin】

**【LG Styler Room/Triple (with sofa bed)】**

Guest Room type	Size	Capacity	Number of guest rooms	Bed type	Bed size	Rates / per room
Standard Semi-Double	13.03㎡	1-2 guests (if sharing beds, maximum 3 persons)	9 rooms	1 bed	140cm×195cm	¥23,000 ~ (1 adult in 1 room / Inclusive of Tax and Service Fees)
【LG Styler Room】 Semi-Double	13.15~14.04㎡	1-2 guests (if sharing beds, maximum 3 persons)	17 rooms	1 bed	140cm×195cm	¥24,000 ~ (2 adults in 1 room / Inclusive of Tax and Service Fees)
【LG Styler Room】 Double	15.25~21.46㎡	1-2 guests (if sharing beds, maximum 3 persons)	27 rooms	1 bed	160cm×195cm	¥25,000 ~ (2 adults in 1 room / Inclusive of Tax and Service Fees)
Standard Twin	15.52~16.35㎡	1-2 guests (if sharing beds, maximum 3 persons)	26 rooms	2 beds	100cm×195cm	¥26,000 ~ (2 adults in 1 room / Inclusive of Tax and Service Fees)
【LG Styler Room】 Twin	19.03~20.26㎡	1-2 guests (if sharing beds, maximum 3 persons)	27 rooms	2 beds	100cm×195cm	¥27,000 ~ (2 adults in 1 room / Inclusive of Tax and Service Fees)
【LG Styler Room】 Triple (with sofa bed)	17.36㎡	1-3 guests (if sharing beds, maximum 4 persons)	9 rooms	2 beds, 1 sofa bed	100cm×195cm	¥33,000 ~ (3 adults in 1 room / Inclusive of Tax and Service Fees)
Deluxe Twin	22.98㎡	1-3 guests (if sharing beds, maximum 4 persons)	1 room	2 beds, 1 sofa bed	100cm×195cm (sofa bed is same size)	¥38,000 ~ (2 adults in 1 room / Inclusive of Tax and Service Fees)

(as of March 2019)

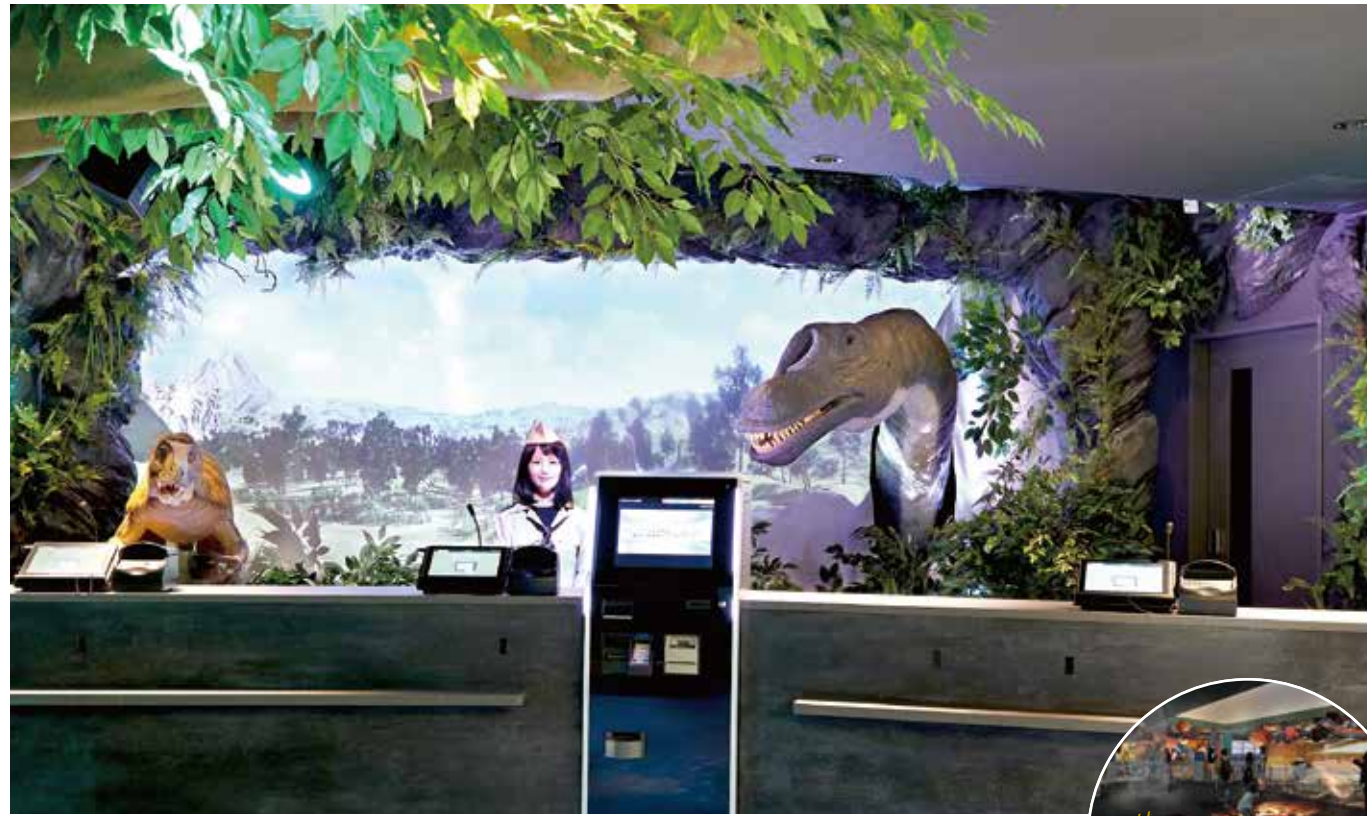
## Restaurant



**[Name]** IRISH PUB "CRAIC"  
**[Capacity]** 61 (29 counter seats, 32 table seats)  
**[Menu]** [Breakfast] Buffet featuring 30 or more original dishes  
[Lunch] One-plate lunch  
[Dinner] Cash on delivery  
**[Hours]** [Morning] 6:30 to 10:00  
[Daytime] 11:30 to 15:00  
(closed on Sat., Sun., and national holidays)  
[Evening] 17:00 to 23:00



# Henn na Hotel Tokyo Haneda



*Concept*  
Cutting-edge technology makes your stay fun  
From the moment you step into the hotel, you'll experience a new world with performances by dinosaur robots and digital images and 3D digital images.

Close to Haneda Airport - Easy access with free shuttle bus!  
The popular robot hotel is opening in Haneda.

"A place to rest your wings." Introducing a new hotel with state-of-the-art robot and technology just 10 minutes from Haneda Airport by free shuttle bus. The highly entertaining performances using dinosaur robots and digital images create a new, fun hotel experience.



【Theater Twin】      【Standard Semi-Double】      【Theater Semi-Double】      【Standard Double】      【Triple Room】

Guest Room type	Size	Capacity	Number of guest rooms	Bed type	Bed size	Rates / per room
Standard Semi-Double	12.32-14.23㎡	1-2 guests	60 rooms	1 bed	140cm×195cm	¥24,000 ~ (2 adults in 1 room / Inclusive of Tax and Service Fees)
Theater Semi-Double	14.95㎡	1-2 guests	5 rooms	1 bed	140cm×195cm	¥26,000 ~ (2 adults in 1 room / Inclusive of Tax and Service Fees)
Standard Double	16.00㎡	1-2 guests	5 rooms	1 bed	160cm×195cm	¥27,000 ~ (2 adults in 1 room / Inclusive of Tax and Service Fees)
Standard Twin	15.72-18.60㎡	1-2 guests	61 rooms	2 beds	100cm×195cm	¥29,000 ~ (2 adults in 1 room / Inclusive of Tax and Service Fees)
Theater Twin	18.01-18.34㎡	1-2 guests	60 rooms	2 beds	100cm×195cm	¥30,000 ~ (2 adults in 1 room / Inclusive of Tax and Service Fees)
Theater Twin extra	21.62㎡	1-3 guests	5 rooms	2 beds, 1 sofa bed	100cm×195cm (sofa bed is same size)	¥31,000 ~ (2 adults in 1 room / Inclusive of Tax and Service Fees)
Triple Room	24.18㎡	1-4 guests (if sharing beds, maximum 5 persons)	4 rooms	3 beds, 1 sofa bed	100cm×195cm (sofa bed is same size)	¥38,500 ~ (3 adults in 1 room / Inclusive of Tax and Service Fees)

(as of March 2019)

## Restaurant



[Name] Early Birds Dining 5.5  
[Capacity] 84 seats  
[Menu] Japanese cuisines & international buffet  
[Hours] [Morning] 5:30 to 9:30 \* Open only for breakfast

# Henn na Hotel Fukuoka Hakata



*Concept*  
In-room light adjustment [Philips Hue]  
You can adjust the color of the lighting in the room to suit your own preferences, with 16 million color variations.

Popular robot hotel is opening in Hakata at a prime location just a 3-minute walk from Nakasu-Kawabata Station

"Pursuing health and sleep in Hakata, the doorway to your trip" Easily access popular tourist spots such as Canal City Hakata and Tenjin area from this prime location just a 3-minute walk from Nakasu-Kawabata Station. Enjoy a comfortable stay in this bustling city oasis packed with the charm of Hakata.



【Family Room】      【Semi-Double/DoubleRoom】      【Standard Twin】      【Standard Twin extra】      【Deluxe Twin】

Guest Room type	Size	Capacity	Number of guest rooms	Bed type	Bed size	Rates / per room
Standard Single	11.62㎡	1 guest	6 rooms	1 bed	125cm×195cm	¥20,000 ~ (1 adult in 1 room / Inclusive of Tax and Service Fees)
Semi-Double Room	12.12-13.94㎡	1-2 guests	12 rooms	1 bed	140cm×195cm	¥22,000 ~ (2 adults in 1 room / Inclusive of Tax and Service Fees)
Double Room	18.02㎡	1-2 guests	7 rooms	1 bed	157cm×195cm	¥24,000 ~ (2 adults in 1 room / Inclusive of Tax and Service Fees)
Standard Twin	18.94-19.25㎡	1-2 guests	46 rooms	2 beds	110cm×195cm	¥24,000 ~ (2 adults in 1 room / Inclusive of Tax and Service Fees)
Standard Twin extra	18.94-19.25㎡	1-3 guests	18 rooms	2 beds, 1 sofa bed	90cm×195cm	¥29,000 ~ (2 adults in 1 room / Inclusive of Tax and Service Fees)
Deluxe Twin	27.92㎡	1-4 guests	6 rooms	2 beds	140cm×195cm	¥35,000 ~ (2 adults in 1 room / Inclusive of Tax and Service Fees)
Family Room	27.92㎡	1-4 guests	7 rooms	2 beds, 2 sofa beds	90cm×195cm	¥44,000 ~ (2 adults in 1 room / Inclusive of Tax and Service Fees)

(as of March 2019)

## Restaurant



[Name] Kome to Budo by SHINGEN  
[Capacity] 51 seats  
[Menu] [Breakfast] Japanese/Western cuisine buffet  
[Lunc/Dinner] Creative Japanese cuisine  
[Hours] [Morning] 6:00 to 10:00  
[Daytime] 12:00 to 15:00  
[Evening] 17:00 to 27:00



# Henn na Hotel Osaka Shinsaibashi



**Robot Orchestra**  
A Robot Orchestra made up of 19 RoBoHoNs performs in time with uniquely Japanese 3D visuals, including features such as blizzards of falling cherry blossoms and folding fans.

Popular robot hotel is opening in Osaka at a prime location just a short walk from Shinsaibashi Station CRYSTA Nagahori Kita Exit 7.

Enjoy great access to popular tourist spots including Dotonbori, Tsutenkaku, and the Osaka Shopping Areas. The smart yet welcoming guest rooms ensure a comfortable stay.



【Double Room】      【Hollywood Twin】      【Standard Twin】      【LG Styler Twin】

Guest Room type	Size	Capacity	Number of guest rooms	Bed type	Bed size	Rates / per room
Double Room	15.62㎡	1-2 guests	10 rooms	1 bed	154cm×195cm	¥20,000 ~ (2 adults in 1 room / Inclusive of Tax and Service Fees)
Hollywood Twin	16.47㎡	1-2 guests	20 rooms	2 beds	90cm×195cm	¥20,000 ~ (2 adults in 1 room / Inclusive of Tax and Service Fees)
Standard Twin	16.14-16.54㎡	1-2 guests	48 rooms	2 beds	97cm×195cm	¥22,000 ~ (2 adults in 1 room / Inclusive of Tax and Service Fees)
LG Styler Twin	17.66㎡	1-3 guests	10 rooms	2 beds	90cm×195cm	¥24,000 ~ (2 adults in 1 room / Inclusive of Tax and Service Fees)

(as of March 2019)

## Restaurant



**[Name]** THE BORING FOODS & TYPICAL MOJITO  
**[Capacity]** 46 seats  
**[Menu]** [Breakfast/Lunch] Buffet restaurant  
[Dinner] Casual dining  
**[Hours]** [Morning] 7:00 to 11:00  
[Daytime] 11:30 to 15:00  
[Evening] Closed  
[Cafe] 8:00 to All time

# Henn na Hotel Osaka Nishi-Shinsaibashi



**From palm robots to dinosaur robots!**  
A team of robots welcomes our guests! Why not enjoy your stay at Henn na Hotel together with the cute little robot called RoBoHoN.

Popular robot hotel is opening in Osaka's America-mura, a prime location just a 5-minute walk from Shinsaibashi Station.

Enjoy great access to popular tourist spots including America Mura, Dotonbori and Tsutenkaku. The mood-raising artistic space and modern guest rooms are sure to enhance your stay.



【Twin Room】      【Triple Room】      【RoBoHoN Room】

Guest Room type	Size	Capacity	Number of guest rooms	Bed type	Bed size	Rates / per room
Twin Room	16.6-17.1㎡	1-2 guests	98 rooms	2 beds	97cm×195cm	¥24,000 ~ (2 adults in 1 room / Inclusive of Tax and Service Fees)
Triple Room	23.8㎡	1-3 guests	2 rooms	2 beds 1 extra bed	97cm×195cm (extra bed 97cm×181cm)	¥35,000 ~ (3 adults in 1 room / Inclusive of Tax and Service Fees)

(as of March 2019)

## Restaurant



**[Name]** THE BORING FOODS & COMMON NEGRONI  
**[Capacity]** 84 seats  
**[Menu]** [Breakfast/Lunch] Buffet restaurant  
[Dinner] Casual dining  
**[Hours]** [Morning] 7:00 to 11:00  
[Daytime] 11:30 to 15:00  
[Evening] 15:00 to 23:30  
[Cafe] 8:00 to All time



# Henn na Hotel Laguna Ten Bosch



## Cutting edge hotel featuring comfort and fun Our latest robots are here to greet you!

Come visit the Tokai Region's first hotel manned by state-of-the-art robots. Father T-Rex, scaled to 3/5th the actual size, will greet you in the Front Lobby. Mother T-rex and baby T-rex will help you check-in at the Check In Counter. Guest Room communication robots, and a variety of other robots throughout the hotel will help make your hotel stay enjoyable. Come enjoy a never-before excitement and comfort.



### The latest robots help make your stay fun

A variety of robots work in the Hotel. Children and adults alike are bound to have fun. Japan's first Room Service Robot brings fun travel memories right to your room.



【Standard Twin】(2-3 guests)

This guest room is ideal for couples and families. The sofa bed, as comfortable as the beds, can be opened up for a third guest.



【Standard Twin】(4 guests)

Up to four guests can stay in this guest room. The ample space is perfect for families, groups, and girls-only getaways, etc.



【Standard Triple】(3 guests)

This guest room has three semi-double beds, and is perfect for girls-only getaways, and couples, etc.



【Deluxe Twin】(2-4 guests)

This is our most expansive guest room for a relaxing hotel stay! Up to six guests, including four adults and two children using existing bed can stay in this room.

Guest Room type	Size	Capacity	Number of guest rooms	Bed type	Bed size	Rates / per room
Standard Twin	25.75㎡	2-3 guests	80 rooms	2 beds, 1 sofa bed	120cm×200cm (sofa bed 90cm×200cm)	¥26,800~( 2 to 3 adults in 1 room/Inclusive of Tax and Service Fees)
Standard Twin	28.64㎡	4 guests	8 rooms	2 beds, 2 sofa beds	120cm×200cm (sofa bed 90cm×200cm)	¥33,600~( 4 adults in 1 room/Inclusive of Tax and Service Fees)
Standard Triple	28.64㎡	3 guests	8 rooms	3 beds	120cm×200cm	¥35,700~( 3 adults in 1 room/Inclusive of Tax and Service Fees)
Deluxe Twin	40.63㎡	2-4 guests	2 rooms	2 beds, 2 sofa beds	120cm×200cm (sofa bed 90cm×200cm)	¥37,800~( 2 to 4 adults in 1 room/Inclusive of Tax and Service Fees)

(as of March 2019)

## Restaurant



[Name] Chef's try table  
 [Capacity] 216 seats (100 indoor seats, 36 terrace seats, 80 inner court seats)  
 [Menu] [Morning] Japanese-Western buffet with approx. 50 dishes  
 [Daytime/evening] Italian Grill Course  
 [Hours] [Morning] 7:00 to 10:00 (last orders: 9:00)  
 [Daytime] 11:00 to 15:30 (last orders: 14:30)  
 [Evening] 18:00 to 21:00 (last orders 21:00)  
 [Bar time] 21:00 to 23:00 (Only on Saturdays and during peak periods)

# Henn na Hotel Huis Ten Bosch



## The world's first Robo-Hotel, aiming for comfort, efficiency, and cost reduction.

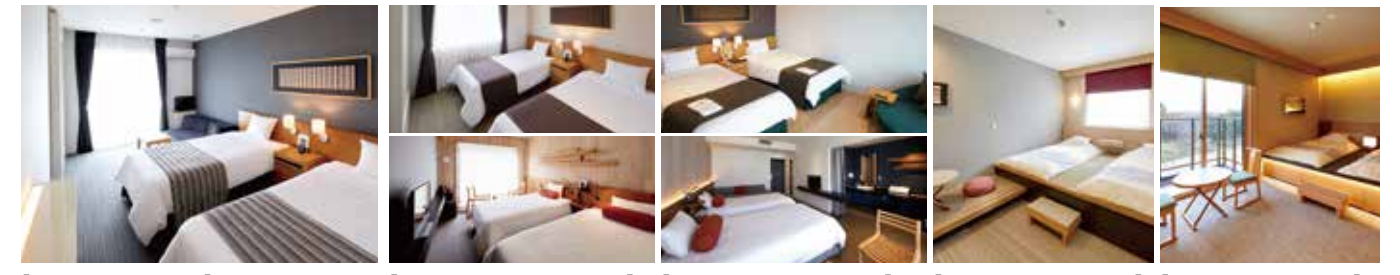
We have aimed to achieve "The Ultimate in Efficiency."

Our hotel's advanced technologies, introduced with the aim of maximizing efficiency, add to the fun and comfort of your stay. Expect the very best when you stay at "Henn na Hotel," an exciting new hotel that promises to enrich your memories of Huis Ten Bosch.



### Equipped with the latest face authentication system

Enjoy a keyless stay thanks to our face authentication system. We provide a comfortable hotel life without the need to search for your key in your bag or worry about losing it.



【Superior Type(East Arm)】

【Standard Type(East Arm/West Arm)】

【Deluxe Type(East Arm/West Arm)】

【Japanese Room Superior(South Arm)】

【Japanese Room Deluxe(South Arm)】

Guest Room type	Size	Capacity	Number of guest rooms	Bed type	Bed size	Rates / per room
Standard Type (East Arm)	21㎡	2 guests	20 rooms	Twin	120cm×206cm	¥15,200~( 2 adults in 1 room/Inclusive of Tax and Service Fees)
Standard Type (West Arm)	21㎡	3 guests	54 rooms	Twin/Triple	120cm×206cm (Stacking Bed 97cm×188cm)	¥15,400~( 2 adults in 1 room/Inclusive of Tax and Service Fees)
Superior Type (Standard Type)	28㎡	4 guests	35 rooms	Twin/Triple/Fourth	120cm×206cm (Stacking Bed 97cm×188cm)	¥18,600~( 2 adults in 1 room/Inclusive of Tax and Service Fees)
Superior Type (Universal Room)	28㎡	2 guests	3 rooms	Twin	120cm×206cm	¥20,600~( 2 adults in 1 room/Inclusive of Tax and Service Fees)
Superior Type (View Bath)	28㎡	2 guests	2 rooms	Twin	120cm×206cm	¥20,600~( 2 adults in 1 room/Inclusive of Tax and Service Fees)
Japanese Room Superior (South Arm)	29㎡	4 guests	38 rooms	Twin/Triple/Fourth	97cm×197cm	¥19,000~( 2 adults in 1 room/Inclusive of Tax and Service Fees)
Deluxe Type (East Arm)	33㎡	4 guests	12 rooms	Twin/Triple/Fourth	120cm×206cm (Stacking Bed 97cm×188cm)	¥25,200~( 2 adults in 1 room/Inclusive of Tax and Service Fees)
Deluxe Type (West Arm)	31㎡	4 guests	18 rooms	Twin/Triple/Fourth	120cm×206cm (Stacking Bed 97cm×188cm)	¥25,200~( 2 adults in 1 room/Inclusive of Tax and Service Fees)
Japanese Room Deluxe (South Arm)	34㎡	5 guests	18 rooms	Twin/Triple/Fourth/Fifth	97cm×197cm	¥25,600~( 2 adults in 1 room/Inclusive of Tax and Service Fees)

(as of March 2019)

## Restaurant



[Name] Restaurant AURA  
 [Capacity] 270 seats  
 [Menu] [Breakfast/Lunch/Dinner] Buffet  
 [Hours] [Morning] 7:00 to 10:00  
 [Daytime] 11:30 to 14:00  
 [Evening] 17:00 to 21:00



# Common Hotel Specifications/Facilities

## Cleaning Robot [LG Styler]

Use the lifestyle closet "LG styler" to freshen up your clothes by removing odors, wrinkles, dust, and pollen.



## Screen Cast Device [Chromecast]

Enjoy Internet contents on the large TV screen.



## communication robot [unibo]

There are a variety of robots throughout the hotel. Everyone from children to adults are sure to be excited! Visit the new robot hotel.



## In-room tablet service [Tabii]

Each guest room is equipped with a "tabii" tablet that allows you to control the air-conditioning, lights, and TV, etc., as well as confirm restaurant seating availability.



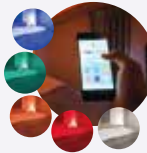
## [BREATHAIR] [France Bed] Mattresses

As part of our commitment to providing a pleasant night's sleep, some rooms are equipped with Breathair, France Bed, and original Henn na Hotel mattresses.



## In-room light adjustment [Philips Hue]

You can adjust the color of the lighting in the room to suit your own preferences, with 16 million color variations.



Specifications	Maihama	Nishi-Kasai	Ginza	Hamamatsucho	Asakusabashi	Akasaka	Haneda	Hakata	Shinsaibashi	Nishi-Shinsaibashi	Kyoto Hachijoguchi Station
Front desk robots	Dinosaur	Dinosaur	Humanoid	Humanoid	Humanoid	Humanoid	Dinosaur/ Humanoid	Dinosaur	Dinosaur	Dinosaur	Dinosaur
[SmartPlate] IoT-connected card	×	×	○	○	○	○	○	×	×	×	×
[Chromecast] Screen cast device	×	○	○	○	○	○	△ (Cannot connect using shared Wi-Fi)	×	×	×	×
Robot concierge	○ (Tapia)	×	○ (unibo)	○ (unibo)	○ (unibo)	○ (unibo)	×	×	○ (RoBoHoN)	○ (RoBoHoN)	○ (RoBoHoN)
[FUTOCON] Futon conditioner (only in some rooms)	×	×	×	△ (Some rooms)	△ (Some rooms)	△ (Some rooms)	△ (Some rooms)	×	×	×	×
[Tabii] In-room tablet service	×	×	×	×	×	○ (Some rooms)	○	○	○	○	○
[LG Styler] Cleaning machine	×	○	○	○	△ (Some rooms)	△ (Some rooms)	△ (Some rooms)	△ (Some rooms)	△ (Some rooms)	△ (2 in the laundry area/paid)	×
[handy] Free rental smartphones	×	○	○	○	○	○	○	○	○	○	○
[COGICOGI] Rental bicycles	×	×	○	○	○	○	×	×	×	×	×
[Philips Hue] In-room light adjustment	×	×	×	×	×	×	×	○	○	×	○

Hotel facilities & services	Maihama	Nishi-Kasai	Ginza	Hamamatsucho	Asakusabashi	Akasaka	Haneda	Hakata	Shinsaibashi	Nishi-Shinsaibashi	Kyoto Hachijoguchi Station
Advance baggage receipt	○ (Only on day of check-in)	○ (Only on day of check-in)	○	○	○ (Only on day of check-in)	○ (Only on day of check-in)	○ (Only on day of check-in)	○ (Only on day of check-in)	○ (Only on day of check-in)	○ (Only on day of check-in)	○ (Only on day of check-in)
Parking reservations	Online reservation From 13 days before check-in	No	No	Telephone reservations 080-5763-9231	No	No	Online reservation From 13 days before check-in	No	No	No	No
Parking	○ (29 cars)	○ (Multilevel/6 cars)	○ (2 cars/pay-by-the-hour)	○ (Joint parking facilities)	○ (4 cars/pay-by-the-hour)	○ (Multilevel/3 cars)	○ (13 cars/reservations take priority)	×	×	×	×
Parking for wheelchair users	○ (Advance contact required, cannot guarantee)	○ (1 car)	×	×	○	×	○ (1 car/advance contact required)	×	×	×	×
Bus stop in front of hotel	Yes	Yes	No	No	Yes	No	Yes	No	No	No	Yes
Rental VR sets	○	○	○	○	○	○	○	○	○	○	○
Breakfast for non-guests	Yes	Staying guests only	Staying guests only	Staying guests only	Yes	Yes	Yes	Yes	Yes	Yes	Yes
Rental umbrellas	○ (Purchase only (Vending machine, 500 yen))	Free	Free	Free	○ (Purchase only (Counter, 300 yen))	Free	○ (Purchase only (Counter, 300 yen))	Free	×	×	×
Vending machine (drinks)	○	○ (Alcohol available)	○	○	○	○	○ (Alcohol available)	○	×	○	○
Vending machine (others)	×	×	○ (Amenities for use during stay)	×	×	○ (Amenities for use during stay)	○ (Amenities for use during stay)	×	×	×	×
Taxi pick-up arrangements	Yes	Yes	Yes	Yes	-	Yes	Yes	Yes	-	-	Yes
Bath/toilet	Separate (Except universal bath rooms)	Unit bath	Unit bath	Unit bath	Some unit baths, some separate	Some unit baths, some separate	Some unit baths, some separate	Some unit baths, some separate	Separate	Separate	Unit baths in single rooms only
Universal room	○	○	○	○	○	○	○	○	○	○	○
Wheelchair rental	○	○	○	○	○	○	○	○	○	○	○
Stroller rental	○ (Paid)	×	×	×	×	×	×	×	×	×	×
Adjoining clinic	×	×	×	○	×	○	○	×	×	×	×

Hotel facilities & services	Maihama	Nishi-Kasai	Ginza	Hamamatsucho	Asakusabashi	Akasaka	Haneda	Hakata	Shinsaibashi	Nishi-Shinsaibashi	Kyoto Hachijoguchi Station
Elevator security	○	○	○	○	○	○	○	○	○	○	○
AED	○	○	○	○	○	○	○	○	○	○	○
Coin laundry	×	○	○	○	○	○	○	○	×	○	○
Icemaker	×	○	○	○	○	○	○	○	×	○	○
Coin lockers (paid)	○	×	×	×	×	○	×	×	×	×	×
LCD TV	○	4K LCD TV (49 inch)	4K LCD TV (49 inch)	4K LCD TV (49 inch)	Large-screen LCD TV	Large-screen LCD TV	Large-screen LCD TV (Projectors in some rooms)	2K LCD TV (40 inch)	4K LCD TV (49 inch)	4K LCD TV (49 inch)	○
Refrigerator (empty)	○	○	○	○	○	○	○	○	○	○	○
Humidifier service	Available in all rooms	○	○	○	○	○	○	○	Available in all rooms	Available in all rooms	Available in all rooms
Amenities for kids	○	○	×	×	×	×	×	×	×	×	×
Free Wi-Fi throughout hotel	○	○	○	○	○	○	○	○	○	○	○
All rooms non-smoking	○	○	△ (Heat not burn cigarettes can be used on the second floor.)	○	△ (Heat not burn cigarettes can be used on the third floor.)	○	○	○	○	○	○
Emergency kit	○	○	○	○	○	○	○	○	○	○	○
Bath towel	○	○	○	○	○	○	○	○	○	○	○
Face towel	○	○	○	○	○	○	○	○	○	○	○
Bath mat	○	○	○	○	○	○	○	○	○	○	○
Robe	○	○	○	○	○	○	○	○	○	○	○
Hair dryer	○	○	○	○	○	○	○	○	○	○	○
Toothbrush set	○	○	○	○	○	○	○	○	○	○	○
Hand/Face soap	○	○	○	○	○	○	○	○	○	○	○
Shampoo	○	○	○	○	○	○	○	○	○	○	○
Conditioner	○	○	○	○	○	○	○	○	○	○	○
Body soap	○	○	○	○	○	○	○	○	○	○	○
Heat-resistant mug	○	○	○	○	○	○	○	○	○	○	○
Disposable slippers	○	○	○	○	○	○	○	○	○	○	○
Hangers (with jacket pins)	○	○	○	○	○	○	○	○	○	○	○
Hairbrush	○	○	○	○	○	○	○	○	○	○	○
Razor	○	○	○	○	○	○	○	○	○	○	○
Facial cotton set (Cotton, cotton swabs, hair tie)	○	○	○	○	○	○	○	○	○	○	○
Air conditioner	○	○	○	○	○	○	○	○	○	○	○
Heated bidet toilet	○	○	○	○	○	○	○	○	○	○	○
Bed with outlets (including USB)	○ (No USB outlet)	○	○	○	○	○	○	○	○	○	○
Electric kettle	○	○	○	○	○	○	○	○	○	○	○
Safety box	○	○	○	○	○	○	○	○	○	○	○
Steam iron/ironing board	○ (Regular iron × 2)	×	×	×	×	×	×	×	×	×	×



# Information

## List of Henn na Hotels

All hotels in the Henn na Hotel chain, which continues to open hotels throughout Japan, are conveniently located within walking distance of the nearest station.

For sightseeing, for shopping, and for business, Henn na Hotel will continue to honor its commitment to providing convenience and comfort for every one of its guests.

### Henn na Hotel 京都ホテル 京都ハチジヨグチ

Prime location 2 minutes' walk from Kyoto Station Hachijoguchi Exit

- <Access by train>
  - Two minutes' walk from Kyoto Station Hachijoguchi Exit
- <Access by car>
  - About 12 minutes from Kyoto Minami IC on the Meishin Expressway
- <Access by plane>
  - From Osaka International Airport, take the Limousine Bus bound for Kyoto Hachijoguchi to Kyoto Hachijoguchi (approx. 50 to 55 minutes) and then walk for 2 minutes
  - From Kansai International Airport, take the Limousine Bus bound for Kyoto Hachijoguchi to Kyoto Hachijoguchi (approx. 90 minutes) and then walk for 2 minutes
  - From Kansai International Airport, take the JR Haruka Limited Express No. 20 to Kyoto Station (approx. 80 minutes) and then walk for 2 minutes from Kyoto Station Hachijoguchi Exit

15 Higashisancho, Higashikujo, Minami-ku, Kyoto-shi, Kyoto Prefecture, 601-8004  
Call Center, Henn na Hotel Kyoto Hachijoguchi  
TEL: 075-662-0333 (Daily: 10:00-17:00 [except Saturdays, Sundays, and national holidays])  
URL <https://www.hennnahotel.com/kyoto-hachijoguchi/>

Opened on  
April 1,  
2019



### Henn na Hotel マハマ東京ベイ

Within walking distance from popular theme parks Lawson's convenience store right in front of hotel.

- <Access by train>
  - Approx. 20 minutes from Tokyo Station on Keiyo Line or Musashino Line / approx. 18 minute walk from JR Maihama Station / approx. 4 minutes by bus from JR Maihama Station (bus departs from Maihama Stn. Bus Terminal No. 2) Bus Terminal No. 2)
- <Access by car>
  - Approx. 5 minutes from Urayasu Ramp on Shuto Expressway, Wangan Line
- <Access by plane>
  - Limousine bus from Haneda Airport to Tokyo Disneyland about 50 minutes / Approx. 18 minute walk from Tokyo Disneyland
  - Limousine bus from Narita Airport to Tokyo Disneyland about 80 minutes / Approx. 18 minute walk from Tokyo Disneyland

5-3-20 Fujimi, Urayasu, Chiba Prefecture 279-0043  
Henn na Hotel Maihama Tokyo Bay Reservation Center  
TEL 050-5894-3737 (Daily 10:00-18:00 [excluding New Year's Eve and New Year's Day])  
URL <https://www.hennnahotel.com/maihama/>



### Henn na Hotel 東京西ヶ崎

Ideal location just 3-minute walk from Nishi-Kasai Station on Tokyo Metro Tozai Line

- <Access by train>
  - Approx. 16 minutes from Otemachi Station on Tokyo Metro Tozai Line
- <Access by car>
  - Approx. 9 minutes from Seshincho Exit on Shuto Expressway, Central Circular Route
- <Access by plane>
  - Approx. 30 minutes from Haneda Airport to Kasai Station on Airport Limousine Bus / Approx. 2 minutes from Kasai Station on Tokyo Metro Tozai Line
  - Approx. 70 minutes from Narita Airport to Kasai Station on Airport Limousine Bus / Approx. 2 minutes from Kasai Station on Tokyo Metro Tozai Line

5-4-7 Nishi-kasai, Edogawa-Ku, Tokyo 134-0088  
Henn na Hotel Tokyo Nishi-Kasai Reservation Center  
TEL 050-5894-3770 (Daily 10:00-18:00 [excluding New Year's Eve and New Year's Day])  
URL <https://www.hennnahotel.com/nishikasai/>



### Henn na Hotel 東京銀座

Prime location from Tsukiji and Ginza area

- <Access by train>
  - Approx. 2-minute walk from Exit 4 Shintomicho Station on Tokyo Metro Yurakucho Line / Approx. 6-minute walk from Exit 4 Tsukiji Station on Tokyo Metro Hibiya Line
- <Access by car>
  - Approx. 1 minute from Ginza Exit on the Shuto Expressway (Inner and Outer Circular Routes)
- <Access by plane>
  - Approx. 17 minutes from Haneda Airport to Hamamatsucho Station by Tokyo Monorail / Approx. 7 minutes via JR Yamanote Line Yurakucho Station to Shintomicho Station on Tokyo Metro Yurakucho Line / Approx. 2-minute walk from Shintomicho station
  - Approx. 60 minutes from Narita Airport to Tokyo City Air Terminal on Limousine Bus / Approx. 10 minutes by taxi from Tokyo City Air Terminal
  - Approx. 54 minutes from Narita Airport Station to Tokyo Station on JR Narita Express / Approx. 5 minutes via JR Yamanote Line Yurakucho Station to Shintomicho Station on Tokyo Metro Yurakucho Line / Approx. 2-minute walk from Shintomicho station

2-2-1 Tsukiji, Chuo-Ku, Tokyo 104-0045 Henn na Hotel Tokyo Ginza Reservation Center  
TEL 050-5894-3771 (Daily 10:00-18:00 [excluding New Year's Eve and New Year's Day])  
URL <https://www.hennnahotel.com/ginza/>



### Henn na Hotel 東京浜松町

Prime location in Hamamatsucho area

- <Access by train>
  - Approx. 1 minute walk from Toei Asakusa Line/ Oedo Line Daimon Station B4 exit
  - Approx. 2 minute walk from JR Hamamatsucho North Exit
- <Access by car>
  - Approx. 2 minutes from Shuto Expressway Inner Circular Route "Shiodome Entrance"
- <Access by plane>
  - Approx. 20 minutes from Haneda Airport to Hamamatsucho Station by Tokyo Monorail / Approx. 2 minute walk from Hamamatsucho Station North Exit
  - Approx. 110 minutes from Narita Station to JR Tokyo Station on Limousine Bus / Approx. 6 minutes from Tokyo Station to Hamamatsucho Station by JR Yamanote Line or Keihinohoku Line / Approx. 2 minute walk from Hamamatsucho Station North Exit

1-24-11 Hamamatsucho, Minato-Ku, Tokyo 105-0013  
Henn na Hotel Tokyo Hamamatsucho Reservation Center  
TEL 050-5894-3781 (Daily 10:00-18:00 [excluding New Year's Eve and New Year's Day])  
URL <https://www.hennnahotel.com/hamamatsucho/>



### Henn na Hotel 東京浅草橋

An ideal sightseeing base, just two minutes walk from Asakusabashi station.

- <Access by train>
  - Approx. 2 minutes from JR "Akihabara station" via JR Sobu line to "Asakusabashi station", then approx. 2 minutes on foot. (Or approx. 15 minutes' walk from JR "Akihabara Station")
  - Approx. 2 minutes' walk from Asakusabashi station on the Toei Asakusa line.
- <Access by car>
  - Metropolitan Expressway (No. 6 Mukojima route). Approx. 15 minutes from the 'Ryogoku junction'
- <Access by plane>
  - Approx. 50 minutes from Haneda Airport to "Asakusabashi station" by Keiiky Airport line express / then approx. 2 minutes' walk from "Asakusabashi station"
  - Approx. 1 hour from Narita Airport to Oshiage station by "Keiiky Sky Access Line" / Approx. 50 minutes from "Oshiage station" to "Asakusabashi station" / 2 minutes' walk from "Asakusabashi station"

1-10-5 Asakusabashi, Taito-Ku, Tokyo 111-0053  
Henn na Hotel Tokyo Asakusabashi Reservation Center  
Tel: 050-5894-3780 (Daily 10:00-18:00 [excluding New Year's Eve and New Year's Day])  
URL <https://www.hennnahotel.com/asakusabashi/>



### Henn na Hotel 東京羽田

Convenient access to Haneda Airport!

- <Access by train>
  - Approx. 6 minute walk from Keiiky Airport Line "Otorii Station", East Exit
- <Access by car>
  - Approx. 5 minutes from Metropolitan Expressway No. 1 Haneda Route, "Haneda Exit"
- <Access by plane>
  - Approx. 7 minutes from Haneda Airport to "Otorii Station" by Keiiky Airport Line / Approx. 6 minute walk from "Otorii Station" East Exit
  - Approx. 95 minutes from Narita Station to "Otorii Station" by Keisei Narita Airport Line Narita Sky Access / Approx. 6 minute walk from "Otorii Station" East Exit

2-11-18 Higashikojima Ota-Ku, Tokyo 144-0033  
Henn na Hotel Tokyo Haneda Reservation Center  
TEL 050-5894-3783 (Daily 10:00-18:00 [excluding New Year's Eve and New Year's Day])  
URL <https://www.hennnahotel.com/haneda/>



### Henn na Hotel 大阪新沙浜

Prime location just a 1-minute walk from Shinsaibashi Station

- <Access by train>
  - Approx. 13 minutes from "Shin Osaka Station" to "Shinsaibashi Station" by Osaka Metro Midotsuji Line / Approx. 1 minute walk from "Shinsaibashi Station" CRYSTA Nagahori Kita Exit 7
- <Access by car>
  - Approx. 8 minutes from Hanshin Expressway Route 1 "Minatomachi"
- <Access by plane>
  - Approx. 30 minutes from Osaka Itami Airport to "Namba Station" by limousine bus "Itami Airport Line Namba Station, JR Namba (OCAT)" / Approx. 2 minutes from "Namba Station" to "Shinsaibashi Station" by Osaka Metro Midotsuji Line
  - Approx. 34 minutes from Kansai International Airport to "Tennoji Station" by Airport Express HARUKA / Approx. 8 minute from "Tennoji Station" to "Shinsaibashi Station" by Osaka Metro Midotsuji Line

5-2, 3-chome Minami Senba, Chuo-ku, Osaka 542-0081  
Henn na Hotel Osaka Shinsaibashi Reservation Center  
TEL 06-6281-3950 (24 hours every day) URL <https://www.hennnahotel.com/shinsaibashi/>



### Henn na Hotel ラグナテンボッシュ

Located within the Lagunasia Theme Park

- <Access by train>
  - From Nagoya ... JR Nagoya Station - (Rapid train) - JR Gamagori Station (approx. 40 minutes) - Free shuttle bus (approx. 15 minutes)
  - From Shizuoka ... JR Hamamatsu Station - (Local train) JR Toyohashi Station (approx. 35 minutes) - (Local train) JR Mikawa - Otsuka Station (approx. 15 minutes) - Local bus from Mikawa-Otsuka Station (approx. 10 minutes)
- <Access by car>
  - From Nagoya ... From Tomei Expressway Otowa-Gamagori IC, take Route 247 Central bypass via Orange Road. Travel straight. Otowa-Gamagori IC - Laguna Ten Bosch approx. 20 minutes [approx. 12km]
  - From Shizuoka ... From Tomei Expressway Toyokawa IC, take National Rt. 151 and follow signs to Laguna Ten Bosch. Toyokawa IC - Laguna Ten Bosch approx. 35 minutes [approx. 17km]
- <Access by plane>
  - Chubu Centrair International Airport - (Meitetsu Airport Limited Express) - Kanayama Station (approx. 30 minutes) - (JR Tokaido Line: Rapid train) Gamagori Station (approx. 40 minutes) - Free shuttle bus (approx. 15 minutes)
  - Nagoya Airport - (Nagoya airport Expressway) - Kanayama Station (approx. 30 minutes) - (JR Tokaido Line: Rapid train) Gamagori Station (approx. 40 minutes) - Free shuttle bus (approx. 15 minutes)

1-4-1 Kaiyo-cho, Gamagori, Aichi 443-0014 Henn na Hotel Laguna Ten Bosch Reservation Center  
TEL 0570-097-117 (Daily 9:00-17:30 [excluding New Year's Day])  
URL <https://www.hennnahotel.com/lagunatenbosch/>



### Henn na Hotel 東京赤坂

Ideal for access from Akasaka.

- <Access by train>
  - Tokyo Metro Namboku / Ginza lines "Tameike Sanno station" 4 minutes' walk from Exit 11.
  - Chiyoda line "Akasaka station" 5 minutes' walk from Exit 5.
  - Tokyo Metro Marunouchi / Ginza lines "Akasakamitsuke station" (Akasaka 2-chome interchange before the intersection mark)
- <Access by car>
  - Metropolitan Expressway Inner Circular Route, 5 minutes from Kasumigaseki
- <Access by plane>
  - Approx. 25 minutes from Haneda Airport by Keiiky airport / Toei Asakusa lines to "Shimbashi station" / 4 minutes from "Shimbashi station" on the Tokyo Metro Ginza line to "Tameike Sanno station" / 4 minutes' walk from "Tameike Sanno station"
  - From Narita Airport by Keisei Narita Airport Skyliner to "Keisei Ueno Station" in approx. 45 minutes / Approx. 6 minutes' walk from "Keisei Ueno station" to "Ueno station" / Approx. 17 minutes from "Ueno station" on the Tokyo Metro Ginza line to "Tameike Sanno station" / Approx. 4 minutes' walk from "Tameike Sanno station"

2-6-14 Akasaka, Minato-Ku, Tokyo 107-0052 Henn na Hotel Tokyo Akasaka Reservation Center  
TEL 050-5894-3782 (Daily 10:00-18:00 [excluding New Year's Eve and New Year's Day])  
URL <https://www.hennnahotel.com/akasaka/>



### Henn na Hotel 福岡博多

Prime location just 3-min. walk from Nakasu-Kawabata Station

- <Access by train>
  - Approx. 4 minutes from "Hakata Station" to "Nakasu-Kawabata Station" by Fukuoka City Subway Kuko Line / Approx. 3 minute walk from "Nakasu-Kawabata Station" Exit No. 3 (Akasaka 2-chome interchange before the intersection mark)
- <Access by car>
  - Approx. 5 minutes from Fukuoka Highway "Gofukumachi Exit"
- <Access by plane>
  - Approx. 9 minutes from Fukuoka Airport to "Nakasu-Kawabata Station" by Fukuoka City Subway Kuko Line / Approx. 3 minute walk from Nakasu-Kawabata Station Exit No. 3

5-4-19 Nakasu, Hakata-ku, Fukuoka City, Fukuoka Prefecture 810-0801  
Henn na Hotel Fukuoka Hakata Reservation Center  
TEL 050-5576-8380 (Daily 10:00-18:00 [excluding New Year's Eve and New Year's Day])  
URL <https://www.hennnahotel.com/hakata/>



### Henn na Hotel 大阪新沙浜

Prime location just a 5-minute walk from Shinsaibashi Station

- <Access by train>
  - Approx. 13 minutes from "Shin Osaka Station" to "Shinsaibashi Station" by Osaka Metro Midotsuji Line / Approx. 5 minute walk from "Shinsaibashi Station" Exit No. 7
- <Access by car>
  - Approx. 5 minutes from Hanshin Expressway Route 1 "Minatomachi"
- <Access by plane>
  - Approx. 30 minutes from Osaka Itami Airport to "Namba Station" by limousine bus "Itami Airport Line Namba Station, JR Namba (OCAT)" / Approx. 2 minutes from "Namba Station" to "Shinsaibashi Station" by Osaka Metro Midotsuji Line
  - Approx. 34 minutes from Kansai International Airport to "Tennoji Station" by Airport Express HARUKA / Approx. 8 minute from "Tennoji Station" to "Shinsaibashi Station" by Osaka Metro Midotsuji Line

10-16, 2-chome Nishishinsaibashi, Chuo-ku, Osaka 542-0086  
Henn na Hotel Osaka Nishi-Shinsaibashi Reservation Center  
TEL 06-6211-5600 URL <https://www.hennnahotel.com/nishishinsaibashi/>



### Henn na Hotel フイステンボッシュ

Prime location just 10-minute walk from Huis Ten Bosch Welcome Gate

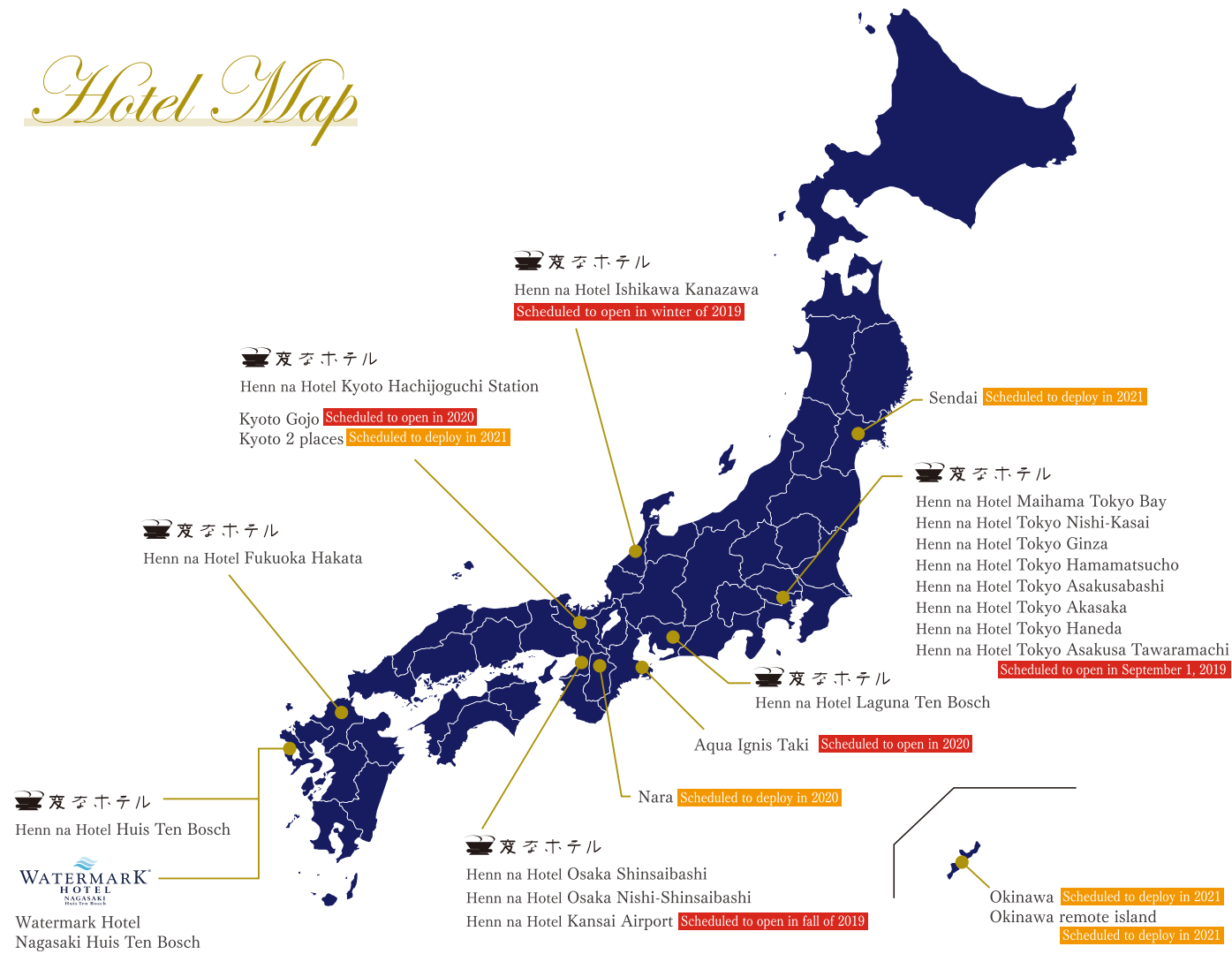
- <Access by train>
  - Subway or JR line from Fukuoka Airport or Hakata Station (travel time about 1 hour 40 minutes)
  - JR line from Nagasaki City (travel time about 1 hour 30 minutes)
- <Access by car>
  - Car from Fukuoka Airport or Hakata Station (travel time about 1 hour 55 minutes)
  - Car from expressways near Huis Ten Bosch (about 30 minutes from Nagasaki Expressway, Higashisonogi IC) (about 15 minutes from Nishi-Kyushu Expressway Sasebo-Daito IC)
- <Access by plane>
  - Car from Nagasaki Airport (travel time about 50 minutes)
  - Subway or JR Line from Fukuoka Airport (travel time about 1 hour 50 minutes)

1-1 Huis Ten Bosch-cho, Sasebo, Nagasaki 859-3243  
Henn na Hotel Huis Ten Bosch General Navigation Line  
TEL 0570-064-110 (Daily 9:00-19:00) URL <http://www.h-n-h.jp/>



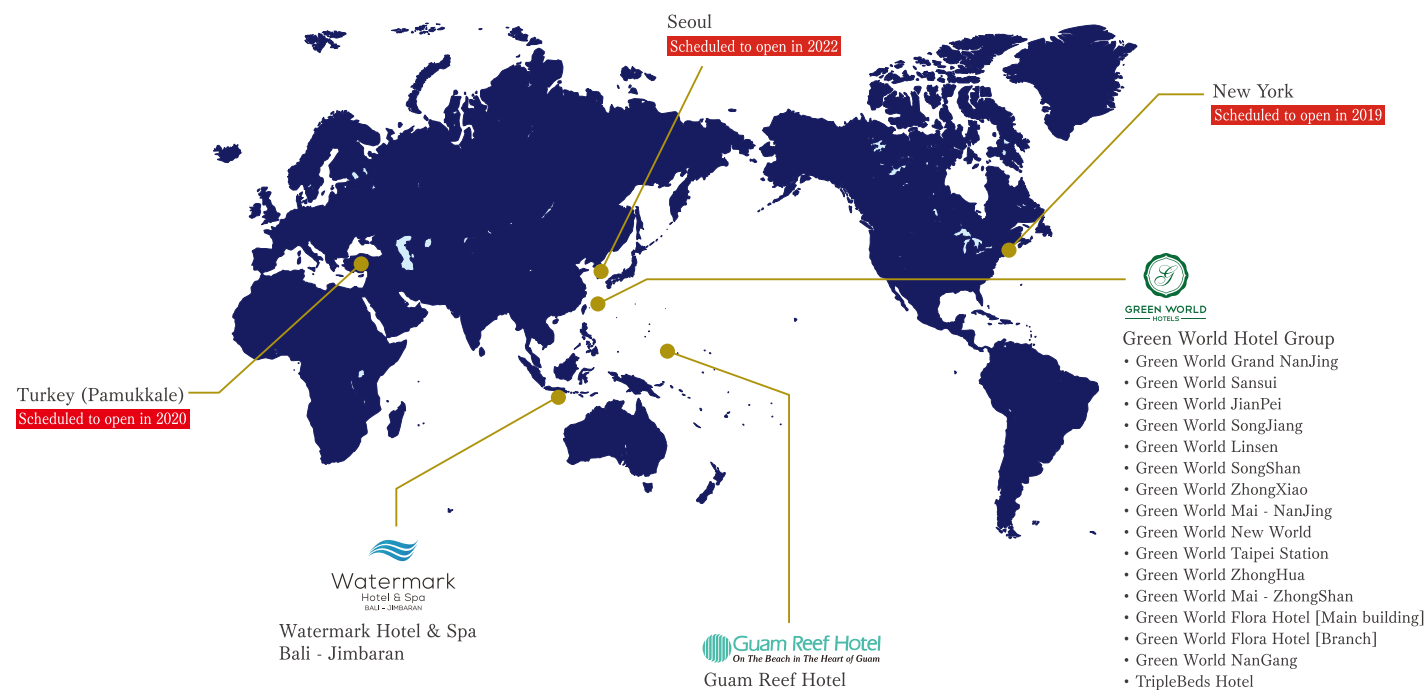


# Hotel Map



## Company Profile

Company name	H.I.S. Hotel Holdings Co., Ltd. <a href="https://www.hishotelgroup.com/">https://www.hishotelgroup.com/</a>
Established	November 2016
Capital	10 million yen
President	Yuji Iwama
Head office	Shinjuku Oak Tower 29F 6-8-1 Nishishinjuku, Shinjuku-ku, Tokyo 163-6029
Affiliate	H.I.S. Co., Ltd. <a href="http://www.his.co.jp/">http://www.his.co.jp/</a>



H.I.S. HOTEL GROUP  
HOTEL BRAND

